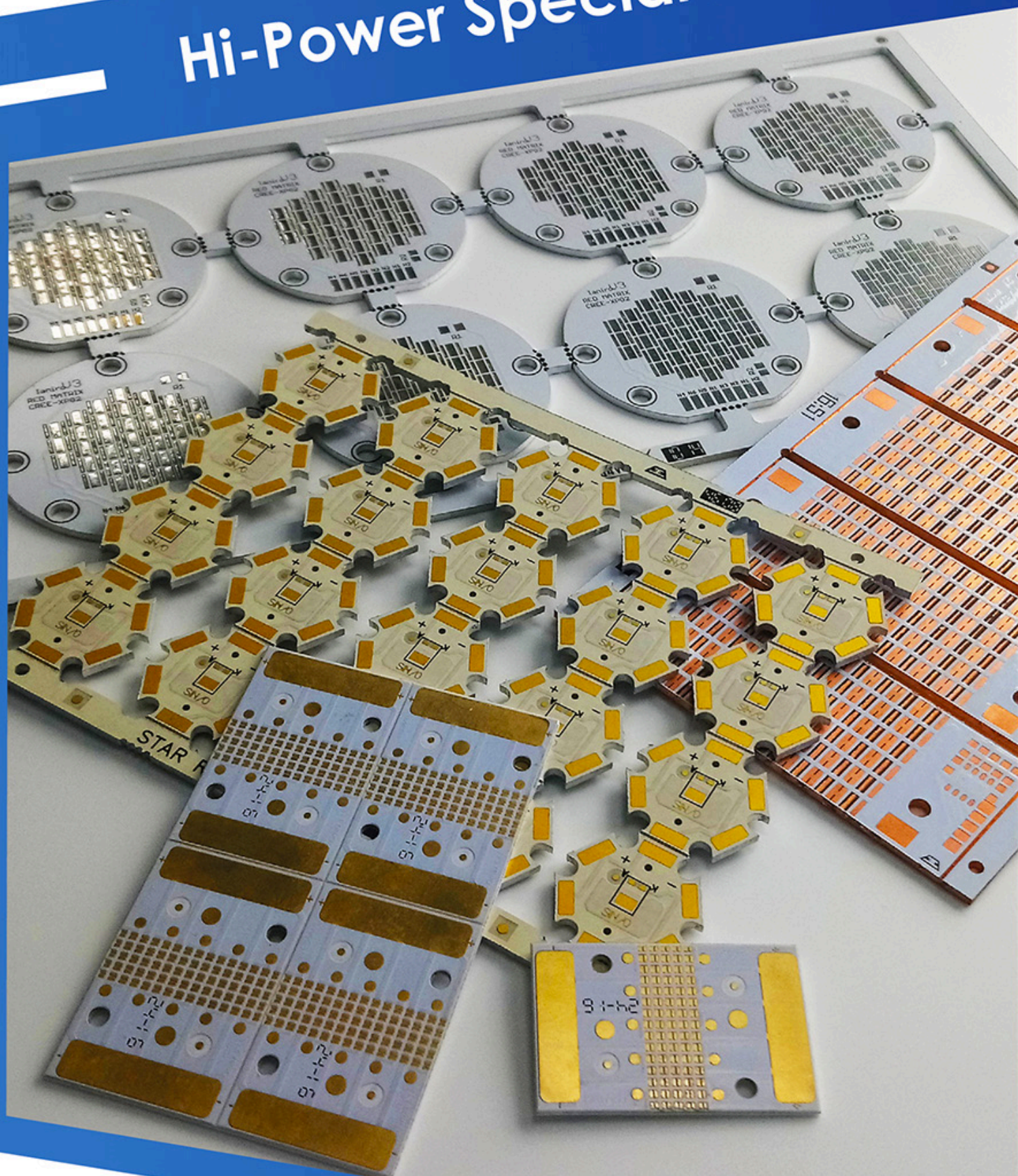


# Hi-Power Special PCB





# OUR COMPANY

**Baselectron** manufactures and supplies **printed circuits** for a wide variety of applications, supporting customers from the very first prototypes to serial productions. The company was founded in 1977 and boasts over **40 years of activity** in an industry where experience is one of the key elements to provide customers with precise, quick responses and support from **specific skills**.







CHANGZHOU TECHELECT ELECTRONIC EQUIPMENT CO.,LTD sales@py-cl.com

Water rinse Three

Water rinse Two

Water rinse One

Blower

Hot tap water

Hot tap water

Hot tap water

Hot tap water

Hot tap water



# THE MISSION

**Baselectron's** mission is the development, industrialization, quick prototyping and preseries of **printed circuits**.



Baselectron S.r.l - Via M. Angelini 18  
27028 San Martino Siccomario (PV) - Italy



**Tel:** +39 0382 556027  
**Fax:** +39 0382 556028



[sales@baselectron.com](mailto:sales@baselectron.com)



[www.baselectron.com](http://www.baselectron.com)



# BASELECTRON

# COMPETENCE IN POWER PCB MATERIALS



## OUR TECHNICAL TEAM

**Baselectron's** technical team can support you in development of **standard** and **special** products, from the drafting of the project to finished product.

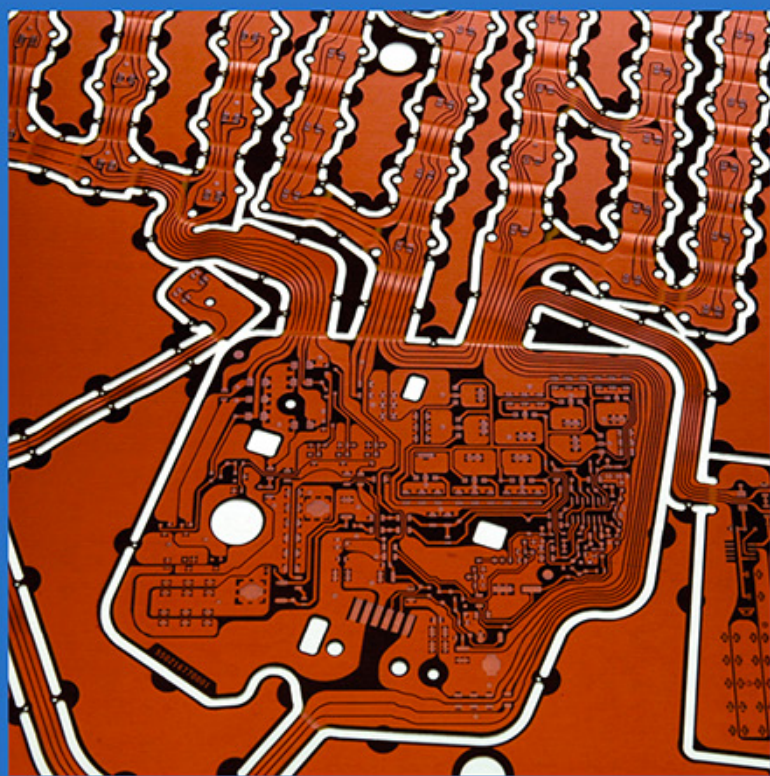


## ALLUFLEX TECHNOLOGY FOR 3D LIGHTING APPLICATIONS

In addition to the *IMS* circuits, which are now a standard, we produce flexible circuits in *Kapton* (for LED strips) and thermal *CEM3*.

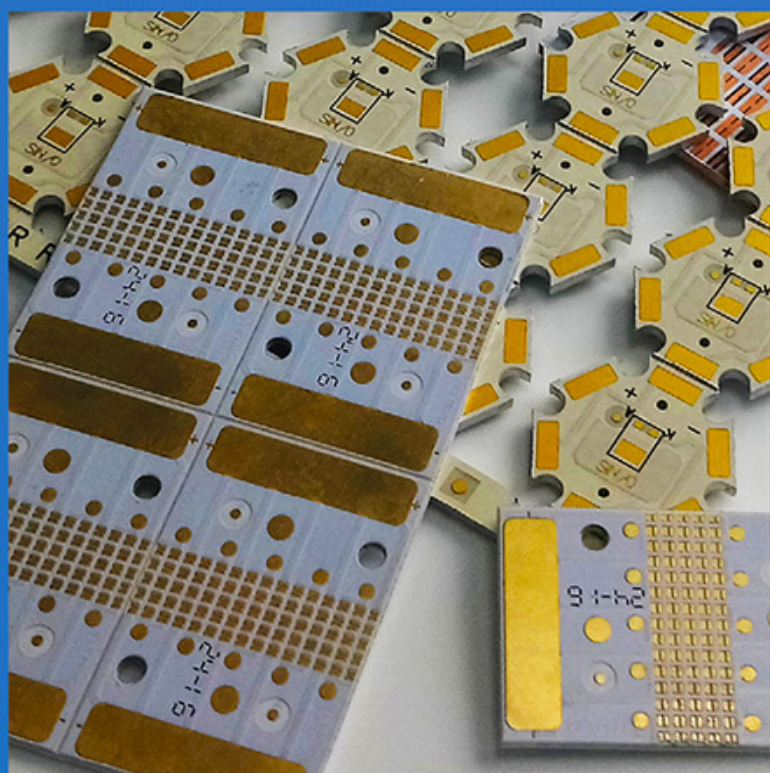
**Baselectron** also developed two new products called **AlluFlex** and **LevelCore** concerning to automotive and high power LED lighting.





## SPECIAL MATERIALS

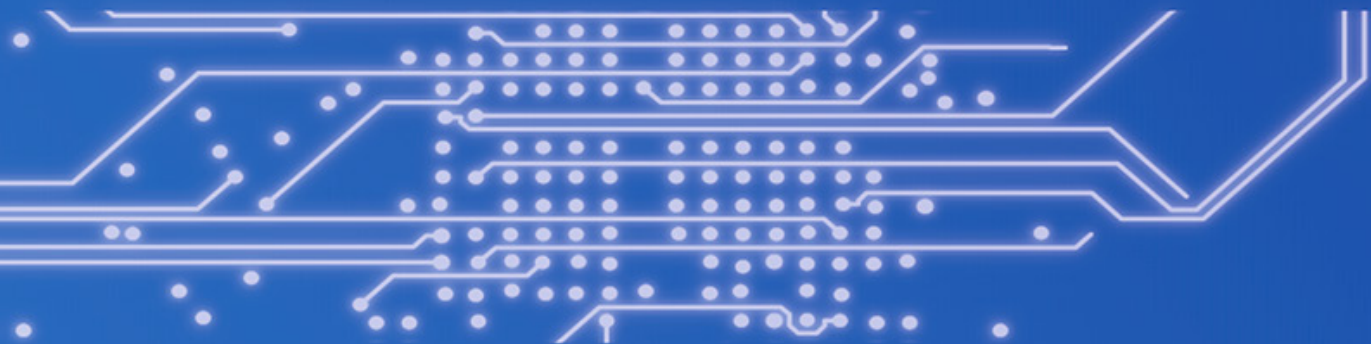
Changeless development of technologies and materials for **power applications**.



## CERAMIC PCB

In addition to the already known *IMS*, when high concentration of thermal energy are required to be drained, we can offer PCB with Ceramic, **LevelCore**, **CopperCore** and other special materials with high heat dissipation coefficient.





## LEVELCORE PCB

**LevelCore** technology allows the thermal pad to be soldered directly on copper core of which of PCB is made without any insulator interposed, so, the  $K$  will be **395 W/mK!**



## SERIES PRODUCTIONS

Of course, we can provide not only prototypes but also **large** productions.





# UNCONVENTIONAL PCB

